

THE
PROTECTOR
GROUP™



Construction

Site

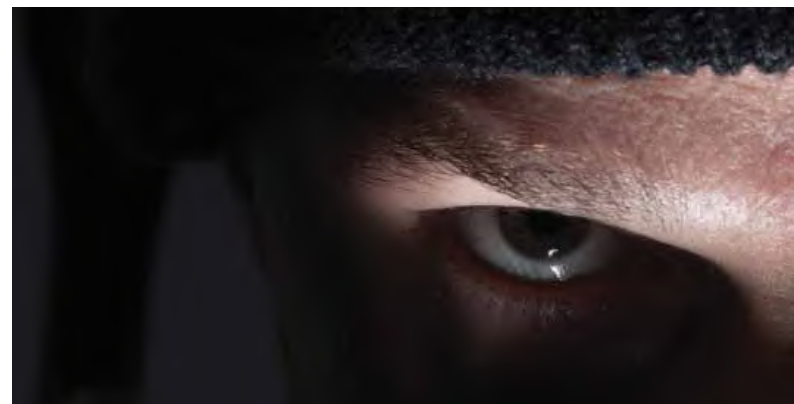
Security



Construction Site Security – A Buyer's Guide to Electronic Security Systems

Construction site security has changed. Up and down the country, guards are being replaced with monitored CCTV systems, driven by better crime prevention results and massive cost savings. The transition is creating headaches for the quantity surveyors, site managers and purchasing professionals, unfamiliar with CCTV products and services, tasked with obtaining an effective security system at a sensible price.

This guide is for you. It cuts through all the technical jargon and marketing hype to focus on the questions you need to ask and the answers should expect. Enabling you to make rational, informed and responsible decisions.





Your future is safer with...

THE PROTECTOR GROUP™

THIS GUIDE IS TO ASSIST YOU IN MAKING THE RIGHT DECISION AND FOCUSES ON THE QUESTIONS YOU NEED TO ASK, AND COMPARE THE ANSWERS TO ENSURE THE CORRECT QUALITY / VALUE FOR MONEY SYSTEM IS USED.

The Protector Group leads the construction industry in providing state of the art security services.

We employ the latest technology in guarding assets, large and small, from the London Underground to construction sites to individual premises. From deterrent through to response our capabilities are acknowledged across the UK.

People make the technology work and our people are among the best trained and motivated - engineers, control room staff and site teams are trained to all industry and regulatory standards and beyond.

Introduction



All Monitored CCTV Systems all work the same way:-

- (a) Electronic Security System Installed.
- (b) Images fed back to **Central Monitoring Station**.
- (c) Intruders break into the site.
- (d) Passive Infrared Detector (PIR) is activated, and CCTV images are transmitted to the **Central Monitoring Station**, where they are viewed by an operator.
- (e) An alarm is confirmed, and a warning is issued to the intruder over a public address system. The incident is reported to police and a security response team.

These actions when completed quickly, and efficiently, result in most intruders moving on, before any serious damage or theft occurs.

In an ideal world ALL systems would perform to the same standards. However, the exact specification of the security system installed has a major impact on how effectively these actions can be performed.

THIS GUIDE HIGHLIGHTS THE **KEY QUESTIONS TO BE CONSIDERED WHEN PURCHASING CCTV PRODUCTS, AND SERVICES FOR A CONSTRUCTION SITE.**

Key Questions

KEY QUESTION NUMBER ONE.

What is the site area that you need protected?

At the start of construction it is worth evaluating the initial site area to be secured, and whether plant equipment, fuel, etc can be secured in a site compound at night, when not being used. Obviously the larger site area needing secured, the more equipment required to meet your specifications and will result in increased costs.

In most construction projects the site area needing protecting will change over the duration of the project. During early groundworks the focus will be on a number of heavy machines, but as the site expands with raw materials, site cabins, more equipment and workers on the site the security needs of the site will change.

Taking into account the construction of the contracted building, with additional possible contents, at some stage of development it may be more practical to secure the perimeter of the entire site area.

KEY QUESTION NUMBER ONE.

Can your electronic security supplier offer the flexibility of tailoring the “best value for money” security at each stage of development?

Protector Group  Other Security firm 



KEY QUESTION NUMBER TWO.

How does the CCTV System work?

Basically in the **Central Monitoring Station** the operator responds to alarms, meaning that your site images are only seen on the **Central Monitoring Station** if the on-site CCTV system determines that an incident has occurred.

What causes the system to activate an incident?

The presence of an intruder is usually defined by the action of a Passive Infra-red (PIR) Detector that senses body heat and movement. The PIR detectors are installed across the site and create triggers whenever anyone breaks the beam. These triggers are treated as alarms and are forwarded to the **Central Monitoring Station**.

There is a wide range of PIR Detectors in the marketplace, some who cost a few pounds and others which are extremely sophisticated devices that can detect movement up to 200 metres away and cost even more than the CCTV camera. The specification of the correct type of PIR Detector is critical.

**Simply - No Detection from PIR =
No Alarm = NO Response.**

KEY QUESTION NUMBER TWO.

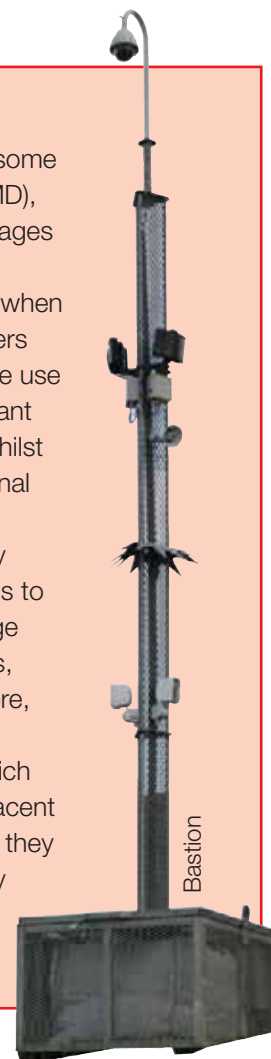
All proposals must include a detailed site plan showing the locations and fields of view and coverage of every PIR detector, as well as the CCTV camera's.

Check the ranges of the PIR Detectors, with no gaps in site perimeter security. Ensure your supplier carries out a physical test to check PIR detectors working correctly and that the supplier operates his own **Central Monitoring Station and that this part of the function is not sub-contracted.**

Protector Group  **Other Security firm** 

Video Motion Detection

Most modern CCTV systems offer some form of Video Motion Detection (VMD), a technique in which successive images of a video stream are automatically compared and an alarm generated when major changes occur. Some suppliers present VMD as an alternative to the use of PIR detectors and offer a significant cost saving as a result. However, whilst VMD can be effective in sterile internal environments, (e.g. a corridor or an office), there are invariably too many natural fluctuations for such systems to operate reliably outdoors (e.g. foliage blowing in the wind, cloud shadows, moving headlights, etc.). Furthermore, one of the biggest problems facing RVRs is repeated false alarms which cause operators to become complacent and not take alarms as seriously as they should. Systems triggered purely by VMD will certainly generate many false alarms.





KEY QUESTION NUMBER THREE.

How will you protect the CCTV system from vandalism?

The CCTV system can be positioned at the extremities of the site and can thus make them susceptible to attacks by determined criminals, and vandals.

The obvious attack is to cut the power off assuming that this will disable the CCTV system.

Quality suppliers can eliminate this problem by protecting against this loss of power by specifying the use of an Uninterruptable Power Supply (UPS) a device consisting of a large bank of batteries and manage the CCTV system when power is removed. The UPS must be capable of running a continued operation of all elements of the CCTV system.

KEY QUESTION NUMBER THREE.

When criminals cut power to CCTV system does system continue to operate efficiently.

Protector Group  Other Security firm 

KEY QUESTION NUMBER FOUR.

How efficient is the CCTV Operating System at night in the dark?

All CCTV cameras require some illumination to operate correctly at night. The main options are:-

- a) White Flood Lights.
- b) Flood Infra-Red (IR).
- c) Cameras with integrated IR.

White flood lights are effective but may cause problems in built up areas. Both flood solutions (white light and IR) require the whole site to be lit continually and thus incur installation and power costs.

Some cameras have integrated IR, meaning that wherever the camera is pointing a beam of IR points in the same direction, this negates the need to illuminate the whole site. It is obviously important to check that the range of the IR is sufficient to meet site specifications, as a camera with integrated IR may be able to see 800 metres in daylight, but only 50 metres at night.

KEY QUESTION NUMBER FOUR.

Your supplier should be able to demonstrate some night time images from each camera to check visibility of the CCTV Security System.

Protector Group  Other Security firm 

Confusing Terminology

Some CCTV cameras are defined as "Day/Night Cameras", a term that is open to misunderstanding. In particular, it does not mean that these cameras can see in the dark; every CCTV camera needs illumination to work properly. "Day/Night" is a term used in the security trade to identify cameras that operate in colour during the day but automatically switch to a black and white "night mode" in low light conditions. Most CCTV cameras designed for outside use include this feature. Beware also of two very distinct uses of "infrared" or "IR" in security applications. Passive infrared (PIR) detectors sense very low level infrared radiation emitted by passing bodies and are used to alert the system to a possible intruder. IR illuminators emit powerful infrared radiation (i.e. heat) that is reflected by objects in the field-of-view. It is these IR reflections that CCTV cameras use to create night time views.



WITHOUT INFRARED



WITH INFRARED

KEY QUESTION NUMBER FIVE.

What Accreditation Standards are required?

The most important British Standard Institute (BSI) accreditation that should be met is BS8418:2010 for detector activated remotely monitored CCTV installations. This standard ensures that the Association of Police Officers are able to allocate a unique reference number (URN) which is essential for police response.

In addition BS8418:2010 is basically a code of practice that covers all aspects of Remote Monitoring of Detector Activated CCTV Systems. This standard specifies from the initial site survey, to identify the best cost effective system required to provide full site security, through to the installation by our own trained engineers.

In addition to accreditation to BS8418:2010 a current certificate of inspection from the National Security Inspectorate (NSI), and a license by the Industry Regulator the Security Industry Authority (SIA), are all required to ensure that all company operatives are licensed by SIA for viewing CCTV in public places.

The safest option is only use companies accredited to BS8418:2010, as insurance companies may also stipulate this standard as an important factor in determining risk, and thus effect premiums, and whose operators are licensed by SIA.

KEY QUESTION NUMBER FIVE.

Your supplier should be accredited to BS8418:2010, have a current certificate from NSI and have a license by the industry regulator SIA.

Protector Group  Other Security firm 



KEY QUESTION NUMBER SIX.

Quality of installed Remotely Monitored CCTV Installation.

The key area is the detail of the site survey, which determines the numbers, and locations of the CCTV camera's and PIR detectors for the site to be fully screened. Too few cameras could result in a security blind area not under detection and result in a costly break-in on site.

In relation to products, the most important factor relating to the PIR detectors is their range – check data sheet, while the CCTV camera performance can be easily determined by looking at images, especially during darkness.

At the heart of all systems is the Digital Video Recorder (DVR) which must be of robust structure due to the working conditions, and comply with BS5979 Codes of Practice. The DVR incorporates a sensitive high-capacity computer hard disc drive to store all the video information and interfaces to all the components of the sub-system, and is effectively the intelligence of the complete system.

It is important that you have your own High Security Monitoring Station, and not renting time from another company, as this ensures your site has 24/7 monitoring, and not reliant on rented time from a sub-contractor. This ensures that your Monitoring Station is regularly checking that everything is correct. It is essential that you receive documented certificate confirming that the on-site system is to the necessary standards and is operating correctly.

KEY QUESTION NUMBER SIX.

Check camera images, PIR data sheets and that the Digital Video Recorder complies with BS8418:2010

Check that the company has their own High Security Monitoring Station to BS5979; Category Two, and that it issues certificates confirming on site system meets necessary standards.

Protector Group  Other Security firm 



KEY QUESTION NUMBER SEVEN.

Fully Comprehensive Insurance Policy.

This is a key area in the evaluation of “Cost” and “Value for Money”, and it is possible to obtain low cost prices for CCTV Security Systems, but which leave your company open to the liability of being responsible for the total value of all the goods stolen on site, which may amount to many £100,000 of pounds, and which must be claimed on your own company insurance, which then results in substantial increased premiums - assuming you have these products covered in your insurance policy.

Also important, is to be aware of who has the liability, when vandals arrive on site and break some of the on-site cameras, and PIR detectors or other system products. Is this the liability of the company hiring the equipment, or does your supplier of Remote Monitoring CCTV installation replace **FREE OF CHARGE**.

KEY QUESTION NUMBER SEVEN.

Your supplier should offer insurance for all your goods contained within the security site being monitored.

Your supplier should be liable for any product damage on the Remote Monitoring CCTV site, and replace these products, quickly, and free of charge.

Protector Group  Other Security firm 



KEY QUESTION NUMBER EIGHT.

What is included in the price being quoted?

As with all contracts it is important that you compare all the various important items on the creation of a Remotely Controlled CCTV Monitored Site, as CCTV systems will, on occasions fail. Added to this, it is likely that some people will be deliberately trying to put the system out of action. The following being just a few items worth noting:-

- (a) Is there any charge for the delivery, and removal, of all the equipment when contract completed.
- (b) What charges are there for the general installation of the equipment, including any civil works.
- (c) As the site develops, is there any charge for the re-siting of cameras and PIR detectors, or other equipment.
- (d) If you require manned response due to a break-in is this supplied free of charge?
- (e) Is there any addition operational cost for “Alarm Handling”, sometimes happens when the installation company, and the High Security Monitoring Station, are separate commercial entities.
- (f) If the system breaks down what is the response time for an engineer to be on site to correct problem.
- (g) Will the installation company provide a manned guard to secure site in the meantime, if system is down.

KEY QUESTION NUMBER EIGHT.

Are all the above services and benefits supplied FREE OF CHARGE?

Protector Group  Other Security firm 

KEY QUESTION NUMBER NINE.

Are there any “Added Value” advantages of Protector Temporary Security Systems?

Quality always costs money, and if you implement all the actions contained in this booklet, it is unlikely that you will be offered the lowest cost proposal. What you will be offered is the “Best Value” for money proposal delivering the highest standards in the Security Industry, and having peace of mind to sleep at night knowing your site security is intact.

By use of our Temporary Security Systems, and turnstiles with biometric readers fitted, it is possible to check, and control, the arrival of all staff, and also sub-contractors staff on site controlling the arrival and departure times to assist with cost monitoring. This is also of value to the Health and Safety of the site controlling that only the authorised people are allowed on site.

For the Project Site Managers monitoring by cameras of sub-contractors actions, along with control of numbers on site can result in cost savings higher than the cost of hire of the equipment.

Protector Temporary Security Systems offer a fully comprehensive system where there are no additional charges, apart from the weekly rent of the equipment, and your site is fully insured and monitored 24/7.

If you choose a supplier who offers no insurance for the goods, or plant, on your site it is likely the price will be cheaper, but you will have the added problem of dealing with the premiums of your insurance company, if you have a break-in, especially if you loose goods worth hundreds of thousands of pounds. Replacement costs of camera and PIR detectors, if not replaced free of charge are around £300/400 each, and costs can escalate if vandals get on sight.

But the main concern with any company who does not offer insurance and also has a sub-contracted High Security Monitoring System, is that it is not guaranteed to be monitored 24/7, which can possibly result in a break-in which is not monitored, and thus responded too, and can result in liabilities of large amounts of money.

KEY QUESTION NUMBER NINE.

Does the security system offer your company “Added Value” services?

Protector Group Other Security firm

KEY QUESTION NUMBER TEN.

Who do you think will provide the most secure professional site, the supplier who is liable for the cost of loss goods, equipment and plant within the secure site, or the supplier who has no liability at all for the loss of goods, equipment and plant?

YOU DECIDE!

KEY QUESTION NUMBER TEN.

Contracted to pay first 12 weeks rental in advance?

Protector Group Other Security firm



The Protector Group has a specialist division providing Temporary Security Solutions for commercial clients across the UK. Security is provided throughout the lifetime of construction and event projects using the unique range of capabilities that are available from the Protector Group.

Our teams provide effective and highly flexible electronic and physical asset protection. Typical schemes include large scale construction projects in the commercial sector and short term event protection for sports and cultural events.

Systems include:

- Patented rapid deployment mast mounted Bastion units;
- Integrated electronic physical barriers and turnstiles;
- BS 5979 remote monitoring suites;
- Low light and IR camera and lighting units.

TSS provides clients with tailored systems of protection suitable for each stage of a project from inception to completion. Clients benefit from our ability to install, maintain and monitor sites using proven, leading edge technical solutions for asset protection and ingress control. Where specified, sites are installed to BS8418, the British standard for detector activated, remotely monitored CCTV installations. All activations are received and managed by our own purpose built BS5979 Category II RVRC.

All our work is fully guaranteed and we are compliant with industry and ACPO guidelines. All On-Site operatives and engineers hold CSCS cards and are fully trained by industry-recognised manufacturers for the installation and servicing of their equipment.

Clients include:

Balfour Beatty;
Carillion;
Bowmer & Kirkland;
Robertson Construction;
ESH Group;
Laing O'Rourke;
and many more.

Temporary Electronic Security Solutions is a service that has continued its growth through the provision of competitive and high quality services to its clients and stands at the forefront of the industry.





The Bastion system is BS8418 compliant. Patented in the UK and Europe, Portable, Anti-vandal and Secure. Rapid installation easily relocated and removed. High quality Pan Tilt Zoom (PTZ) and or static, mono or true day/night cameras enable full coverage of all integral areas. The perimeter and integral secure areas are covered using external movement detectors and twin ended beams. Intruders activate these causing the system to generate an alarm condition.

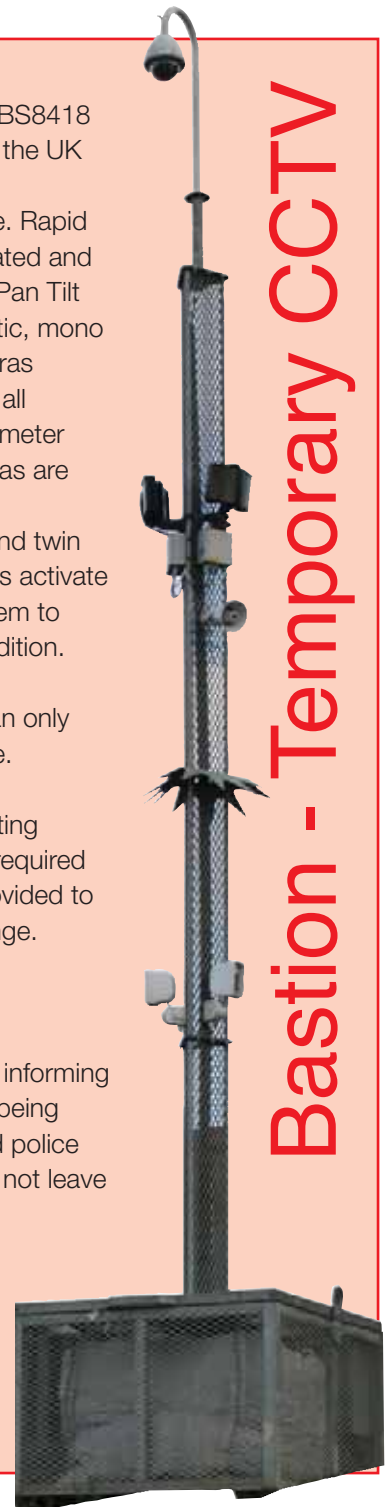
In the dark cameras can only view what they can see.

Full infrared or soft lighting depending on what is required and legally viable is provided to cover each camera range.

Audio challenges

Audio announcements informing intruders that they are being recorded on CCTV and police will be called if they do not leave immediately.

Bastion - Temporary CCTV



The Protector Group is a leading designer, installer and maintainer of cutting edge, cost effective CCTV, Intruder Alarm and Access Control systems for both residential and commercial clients.

We offer a complete service across the United Kingdom, and our systems can enable you to:

- Secure your premises 24/7 if required;
- View your premises in real time from anywhere in the world;
- Have high quality recordings to be used in evidence;
- Be instantly alerted by telephone, text or email whenever an alarm is triggered;
- Open your front door or gate remotely via PC or mobile;
- Warn intruders off your property using our BS5979 Cat II Control Room;
- Ensure your security by controlling access to your home or workplace;
- Integrate your CCTV system with existing commercial security infrastructure or home management systems;
- Have confidence in your security system by becoming part of a professional and thorough maintenance and servicing package.

We are specialists in analogue, IP, WiFi, Radio and Satellite Internet Protocol systems and will always visit your premises before designing a range of options that suit both your security needs and budget.

As a systems house, The Protector Group believes in providing their clients with up to date equipment which gives optimum performance for the most competitive cost. We are able to source equipment from many manufacturers in order to get the best engineered solution to the client's requirements.

We have continuous training of both installation and service engineering personnel in order to provide our staff with the ability to "multi-role".

Our design teams are kept up to date with the latest equipment releases by constant use of our supplier technical databases, and by attending trade shows and conferences to analyse all technological advances within the Security industry.

Our Company accreditations include NSI Gold, SSAIB, BSIA and BSi, and we install to all relevant British Standards including BS EN 5013-1-7 and BS8418.

The Protector Group is proud to be associated with such clients as:

McDonalds Restaurants Ltd, Bailey Rail, Metronet, English Heritage, Inviron.

As a Total Security Provider, The Protector Group can offer its clients the very best security solutions, compliant with the relevant British Standards, whilst remaining within a tight competitive budget.





Lewis trailer is the only true BS 8418 compliant system on the market as a stand alone unit.

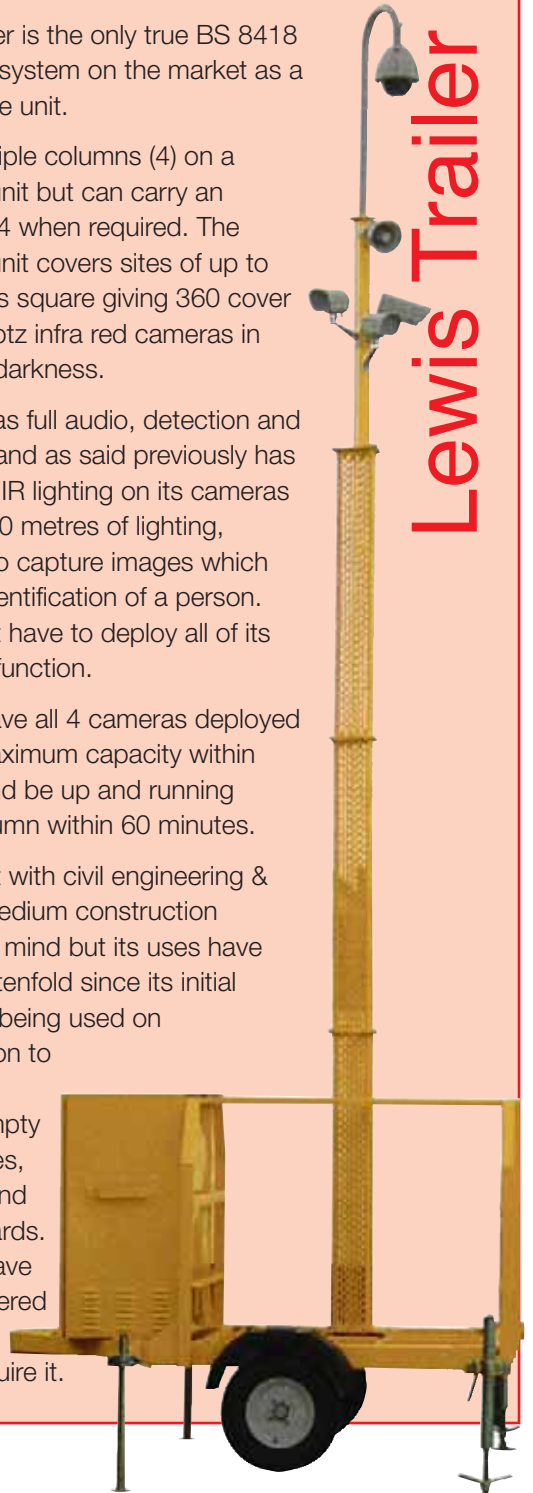
It has multiple columns (4) on a standard unit but can carry an additional 4 when required. The standard unit covers sites of up to 120 metres square giving 360 cover from all 4 ptz infra red cameras in complete darkness.

The unit has full audio, detection and recording and as said previously has integrated IR lighting on its cameras that give 60 metres of lighting, sufficient to capture images which result in identification of a person. It does not have to deploy all of its towers to function.

We can have all 4 cameras deployed to their maximum capacity within 8 hours and be up and running with 1 column within 60 minutes.

It was built with civil engineering & small to medium construction projects in mind but its uses have multiplied tenfold since its initial inception, being used on construction to demolition sites to empty warehouses, factories and builders yards. We also have a self powered unit if our clients require it.

Lewis Trailer



Monitored CCTV is one of the fastest growing sectors within the security industry. The Protector Group is leading the way in this field. Many installers use third party monitoring stations but we offer this service first hand to our customers from our own BS5979 CAT2 certificated monitoring station.

We are proud to be utilising state of the art technologies supplied from the market leaders and a major new investment in additional monitoring software shows the Protector Group's commitment to remaining the number one choice in CCTV monitoring.

Typical connections include:

- ADSL - failing over to 3G/GPRS should the ADSL line fail;
- 3G - failing over to GPRS in the event of network failure;
- ISDN - failing over to PSTN in the event of line fail.

With 24 hour line monitoring, the control room is able to identify faults and action them within minutes of the fault being received.

Protector Group is now able to receive alarm signals from virtually any source. Some of the more popular supported transmission types include:

- ADPRO Fastrace, FastTX, FastVU & Fastscan;
- Axis IP CCTV;
- Vista Smart Tel;
- Digital Sprite 2.

The Protector Group classifies itself as a "Total Security" provider as we offer in-house, all in one bespoke monitoring packages that are tailored to our customers individual needs and not just an "out the box" package offered by some of our competitors.

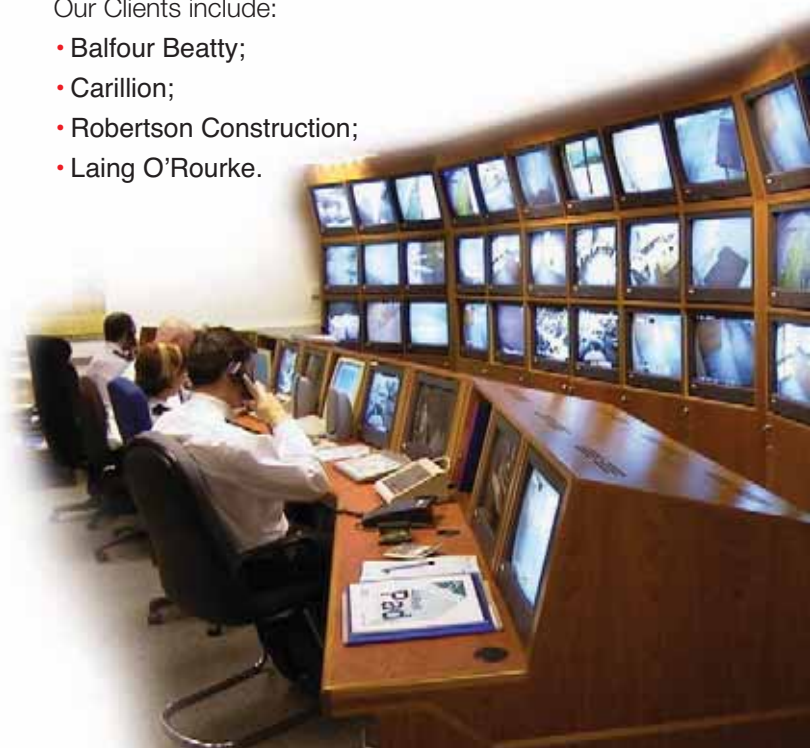
Some of the packages include:

- Black Screen Monitoring;
- Black Screen Monitoring with mobile response;
- Hourly Patrols;
- Real Time Monitoring.

Our staff are fully trained in-house and licensed by the SIA. Continuous training packages ensure competency levels are maintained and our service levels are envied by the industry.

Our Clients include:

- Balfour Beatty;
- Carillion;
- Robertson Construction;
- Laing O'Rourke.





Rapid cam is the Protector Group's own system. A battery powered radio transmitted CCTV confirmation system installed within a few hours. It has a battery powered two way audio system allowing warning announcements to deter or inform intruders they are being monitored. It's totally wire free and an exceptional tool in catching criminals. The system can be used for anything from construction and civil engineering sites to domestic dwellings for clients wanting to look after their homes whilst away on holiday.

Rapid Cam



The Protector Group lead the industry in providing state of the art security services.

WE ARE THE TOTAL SECURITY PROVIDER.

All our Systems
are available
on either rental
or outright
sale basis.

In addition to our Construction Site Security we have a range of Permanent and Temporary solutions.

The Protector Group supply and install both half and full height turnstiles in a variety of styles and finishes. Access control systems can be proximity fob, card or biometric reader complete with full audit trail if required.

Turnstiles



The Asset Shield is a wire free monitored intruder alarm system, ideal for quick response and temporary installations.



Radio Intruder Alarms

Radio Fire Alarms

We supply Hyfire's wire free and hybrid monitored fire alarm systems.



We hold all the key accreditations, certificates and industry standards including...

- BS5979 - CAT 2 Monitoring Station
- BS7858 - Vetting & Screening
- BS8484 - Lone Worker Protection
- Achilles Link Up
- PD6662 - European Standards
- On Security Systems Installation and Operation
- BS7499 - Provision of Manned Guarding Services
- Safe Contractor
- Construction Line
- SSAIB - Security Systems Alarm Inspection Board
- ICO - Data Protection Code of Practice CCTV
- ACPO - Association of Chief Police Officers - Compliance to Code of Practice for Key Holding and Alarm Response
- BS7984 - Key holding and Response Services
- NSI - Gold Award
- BSIA
- CHAS
- ISO 9001: 2008
- Security Industry Authority - Approved Contractor
- Achilles Building Confidence



So Lets Summarise

The Protector Group Ticks all of the boxes.

The Big question is, how do the other security firms compare?

	Protector	other
1. Best Value for Money.	<input checked="" type="checkbox"/>	<input type="checkbox"/>
2. Detailed Site plans.	<input checked="" type="checkbox"/>	<input type="checkbox"/>
3. UPS Back Up on CCTV.	<input checked="" type="checkbox"/>	<input type="checkbox"/>
4. Cameras with Intergrated (IR).	<input checked="" type="checkbox"/>	<input type="checkbox"/>
5. SIA Licensed.	<input checked="" type="checkbox"/>	<input type="checkbox"/>
6. Own BS5979 Monitoring.	<input checked="" type="checkbox"/>	<input type="checkbox"/>
7. Fully Comprehensive Insurance.	<input checked="" type="checkbox"/>	<input type="checkbox"/>
8. Inclusive Price.	<input checked="" type="checkbox"/>	<input type="checkbox"/>
9. Added Value.	<input checked="" type="checkbox"/>	<input type="checkbox"/>

THE
PROTECTOR
GROUP™



^{THE}
PROTECTOR
GROUP™

Head Office & Service Centre

The Protector Group Ltd.
Protector House,
Station Approach,
Team Valley Trading Estate,
Gateshead,
NE11 0ZF

Stoneyburn Suite,
Stadium House,
Alderstone Road,
Livingston,
West Lothian,
EH54 7DN

Centurion House,
129 Deansgate,
Manchester,
M3 3WR

Tel: 0800 316 1144
Web: www.protectorsecurity.co.uk